

# EN SERIES

High Reliability  
For Small Spaces

ENCAPSULATED  
COMPRESSOR

2.2 - 37 kW

**ELGi**<sup>®</sup>  
Always Better.



# EN SERIES

Compact | Silent | Reliable

**We are constantly evolving to suit the market needs.**

For more than 60 years, ELGi has built world-class compressors to address specific industrial needs. ELGi's EN Series is compact, silent, and reliable. It offers an array of features for industries where size, reliability, and cost matter.

**ELGi's EN Series screw air compressors are designed to encapsulate all functional components and the compressor within one common housing. With their small footprint, high reliability, and low maintenance requirements, the EN Series compressors are ideal for small and medium scale industries such as food packaging, sorting, garages, machining, and fabrication workshops.**



General Manufacturing



Vehicle Service Centers



Wood Working



Machining

## EN SERIES

High Reliability for Small Spaces



Compact and Elegant  
Design

Best-in-Class  
Reliability

Industry Leading  
Warranty

Encapsulated  
Airend

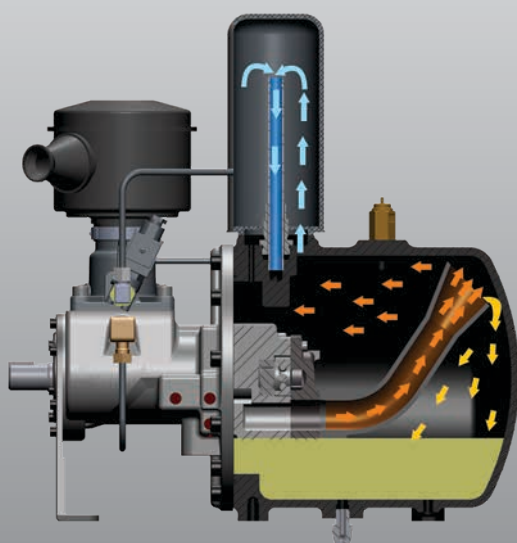


# EN SERIES

## Features and Benefits

### Energy Efficiency through Encapsulated Components

The EN Series is compact and offers a space-saving design powered by ELGi's energy-efficient  $\eta$ -V profiles, with zero leakages due to integrated components and connections. In addition, the unique component assembly supports the production process through energy savings, minimisation of operational pressure drops, space-saving, and smooth working due to silent operation.



### Highly Efficient Air-Oil Separation

The air-oil separation by impact and deceleration action involves three stages for efficient air-oil separation with (<3ppm)

#### Stage 1

Impact of air-oil mixture on the tank's circumferential area.

#### Stage 2

Deceleration action of air-oil mixture to remove oil particles.

#### Stage 3

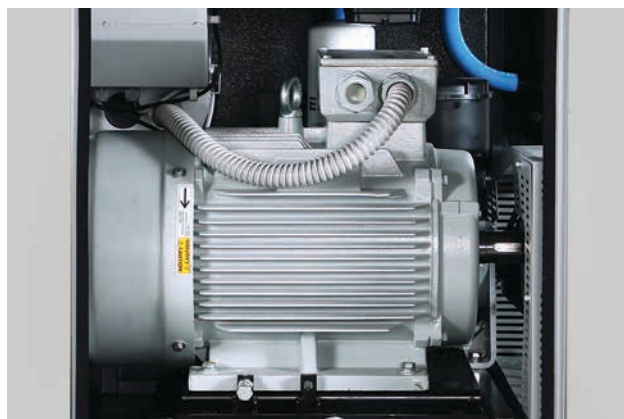
Air with minor traces of oil enters the spin on separator for separation.

## The Ideal Compressor for Industrial Applications where Size, and Cost Matter.



### Compact Design

The compressor design allows fitting into small spaces, thereby saving space and unrestricted movement in the work area.



### Maximise Productivity with a Highly Efficient and Reliable Motor

The highly efficient heavy-duty TEFC/S1/IP55 motor is suited for ambient temperatures up to 50°C. It has built-in safety systems that prevent breakdowns, saves energy, and maximises production.

## Neuron XT Controller

Custom Designed and Efficient Control Solution

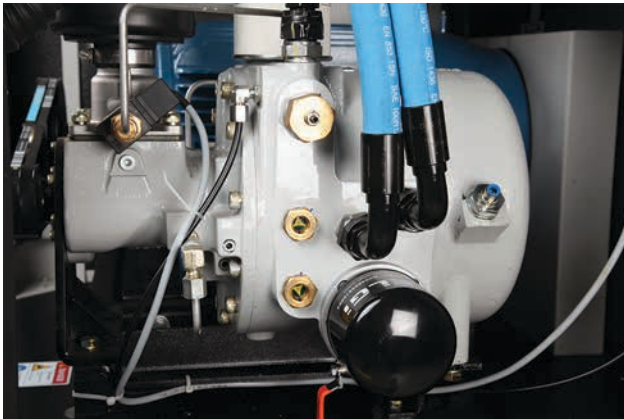
### Increase System Productivity

The Neuron XT controller is a custom-designed and efficient control solution that allows users to monitor and control overall performance with easy-to-use service indications, malfunction alarms, and safety shutdowns. Built-in with service protect modules, the controller includes service and operational log features to provide real-time feedback and increase system productivity.



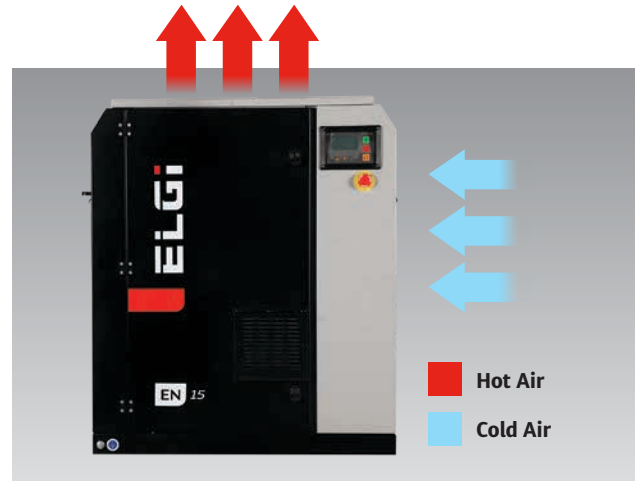
**Designed for a wide range of temperatures up to 50°C | Remote start/stop facility | MODBUS communications for DCS control through RS485 port | In-built phase loss and phase reversal protection**

## Ingeniously Constructed for Higher Reliability.



### Ease of Maintenance

The compressor has a single service door access to routine maintenance points and a spin-on oil filter and separator for fast and easy regular service.



### Robust Cooling System in High Ambient Temperatures

The EN compressor is built for high ambient temperatures up to 45°C, with major components designed for 50°C. Its unique air-cooling system comes with separate hot and cold zones ensuring a long life for the compressor. In addition, the high efficiency coolers and cooling fans ensure low operating temperatures, better energy conservation, and longer operations. An after-cooler comes as standard on all base- and tank-mounted EN compressors.

## Save Energy

by Varying Motor Speed

### Optional Variable Speed Drive for Energy Efficiency

ELGi's EN Series Variable Speed Compressor is energy efficient, which matches the output with demand by varying motor speed. When the demand goes down, the power consumption also goes down, eliminating the frequent load unload cycle, thereby saving energy over time.



Only available for  
EN5X - EN15 models



## Compact Design, Reliable Performance and Significant Savings

### Low Cost of Maintenance

The EN Series has a slow-running airend with fewer parts and connections than any other compressor in its class, which ensures minimal maintenance.



### Modular Design to Accommodate a Tank and Dryer as an Air Station

Enabled to remove moisture from compressed air efficiently.



### Global Safety Standards

The robustly built EN Series compressors meet all global safety standards, including CE.



### Industry Leading Warranty of up to 6 Years\* without Limitation of Working Hours

Customers can make use of an industry-leading warranty on the airend and the package that stands testimony to the robustness and life of the compressor.



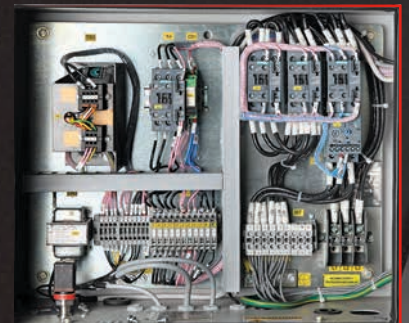
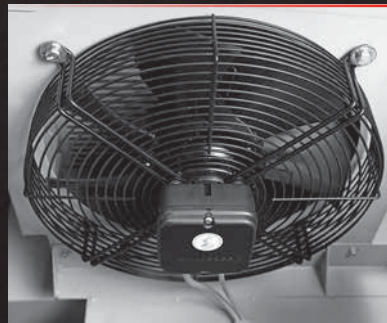
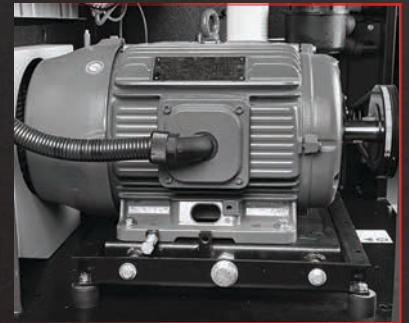
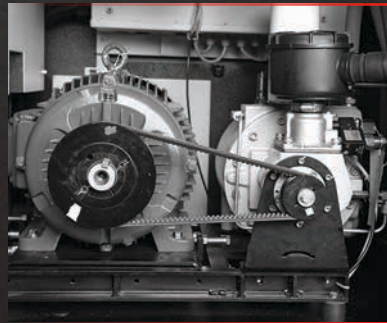
### Low Noise Levels

Low noise levels positively contribute to a safe working environment.



### Improved Compressor Life Time

The air filtration system provides clean suction air that keeps internal components clean and increases the cooling efficiency, thereby increasing the compressor's life.



\*On the airend. Terms & Conditions apply.

## Technical Specifications - 50Hz

Model	Nominal Power		Working Pressure		Max Pressure		Free Air Delivery (FAD)		Weight*	Noise	Tank**
50Hz	kW	HP	bar g	psi g	bar g	psi g	m <sup>3</sup> /min	cfm	Kg	dB(A)	Ltrs.
Length: 615mm Breadth: 715mm Height: 845mm (Base-Mounted)											
Length: 1526mm Breadth: 715mm Height: 1505mm (Tank-Mounted)											
EN 2	2.2	3	7	102	7.2	104	0.32	11.2	133	61	270
EN 2	2.2	3	9.5	138	9.7	141	0.25	8.7	133	61	270
EN 3	3	4	7	102	7.2	104	0.43	15.3	133	61	270
EN 3	3	4	9.5	138	9.7	141	0.36	12.7	133	61	270
EN 3	3	4	12.5	181	12.7	184	0.25	9	133	61	270
EN 4	4	5	7	102	7.2	104	0.54	19	143	64	270
EN 4	4	5	9.5	138	9.7	141	0.48	16.9	143	64	270
EN 4	4	5	12.5	181	12.7	184	0.4	14.2	143	64	270
EN 5	5.5	7.5	7	102	7.2	104	0.74	26	150	64	270
EN 5	5.5	7.5	9.5	138	9.7	141	0.64	22.4	150	64	270
EN 5	5.5	7.5	12.5	181	12.7	184	0.53	18.6	150	64	270
Length: 875mm Breadth: 800mm Height: 1008mm (Base-Mounted)											
Length: 1548mm Breadth: 919mm Height: 1669mm (Tank-Mounted,270L)											
Length: 1945mm Breadth: 921mm Height: 1802mm (Tank-Mounted,500L)											
EN 5x	5.5	7.5	7	102	7.2	104	0.84	29.5	235	66	270/500
EN 5x	5.5	7.5	9.5	138	9.7	141	0.68	24	235	66	270/500
EN 5x	5.5	7.5	12.5	181	12.7	184	0.54	19.2	235	66	270/500
EN 7	7.5	10	7	102	7.2	104	1.13	40	260	66	270/500
EN 7	7.5	10	9.5	138	9.7	141	0.93	33	260	66	270/500
EN 7	7.5	10	12.5	181	12.7	184	0.76	27	260	66	270/500
EN 11	11	15	7	102	7.2	104	1.76	62	280	71	270/500
EN 11	11	15	9.5	138	9.7	141	1.47	52	280	71	270/500
EN 11	11	15	12.5	181	12.7	184	1.23	43.6	280	71	270/500
EN 15	15	20	7	102	7.2	104	2.04	72	310	71	500
EN 15	15	20	9.5	138	9.7	141	1.78	63	310	71	500
EN 15	15	20	12.5	181	12.7	184	1.57	55.5	310	71	500
Length: 930mm Breadth: 1150mm Height: 1450mm											
EN 15x	15	20	7	102	7.2	104	2.48	88	520	69	BM
EN 15x	15	20	9.5	138	9.7	141	2.12	75	520	69	BM
EN 15x	15	20	12.5	181	12.7	184	1.81	64	520	69	BM
EN 18	18.5	25	7	102	7.2	104	3.11	110	558	69	BM
EN 18	18.5	25	9.5	138	9.7	141	2.63	93	558	69	BM
EN 18	18.5	25	12.5	181	12.7	184	2.15	76	558	69	BM
EN 22	22	30	7	102	7.2	104	3.54	125	610	69	BM
EN 22	22	30	9.5	138	9.7	141	3.06	108	610	69	BM
EN 22	22	30	12.5	181	12.7	184	2.6	92	610	69	BM
EN 30	30	40	7	102	7.2	104	4.3	152	678	69	BM
EN 30	30	40	9.5	138	9.7	141	3.6	127	678	69	BM
EN 30	30	40	12.5	181	12.7	184	3	106	678	69	BM
Length: 1250mm Breadth: 1025mm Height: 1650mm											
EN 30x	30	40	7	102	7.5	109	5.41	191	850	74	BM
EN 30x	30	40	9.5	138	10	145	4.39	155	850	74	BM
EN 30x	30	40	12.5	181	13	189	3.6	127	850	74	BM
EN 37	37	50	7	102	7.5	109	6.57	232	890	74	BM
EN 37	37	50	9.5	138	10	145	5.47	193	890	74	BM
EN 37	37	50	12.5	181	13	189	4.7	166	890	74	BM

### Note:

- Free Air Delivery (FAD) is tested as per ISO 1217 : 2009 Annexure C (Annexure E: for VFD machine) Edition: 4; Sound level measured as per ISO 2151, Second Edition.
- \*\*Compressors mounted on horizontal receiver tank and dryer available as option (for models up to EN15).
- Due to continuous engineering improvements, the specifications are subject to change without prior notice.
- Product images displayed in this brochure are only for representative purpose and may not exactly match the actual product.
- For other electrical supply options, reach out to our sales team.



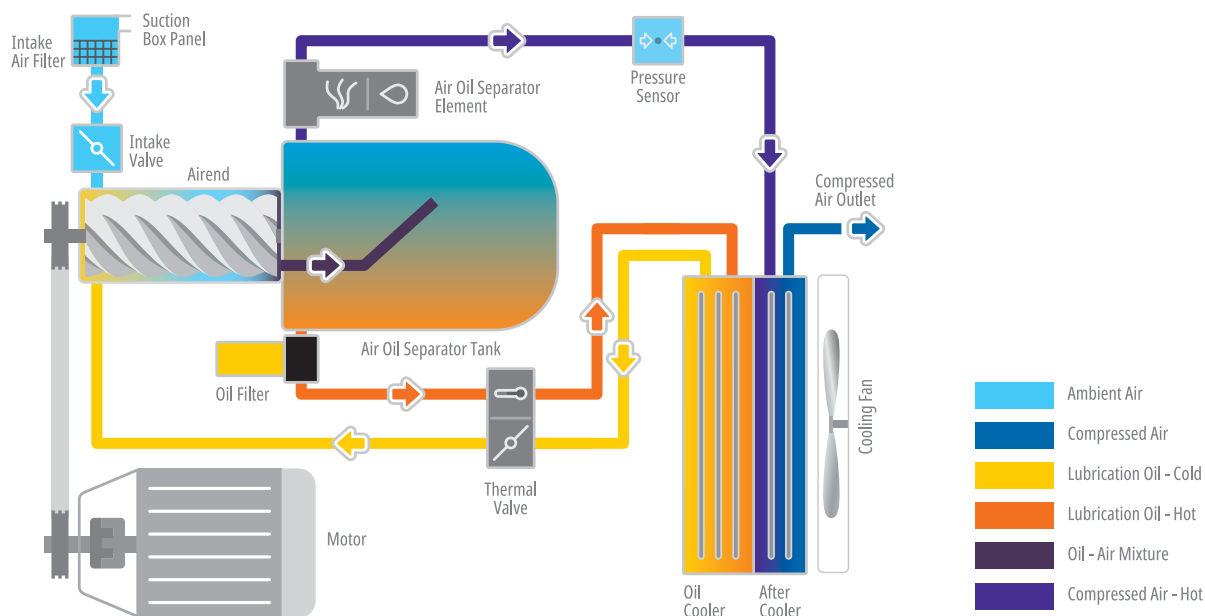
## Technical Specifications - VFD Model

Model	Nominal Power		Working Pressure		Max Pressure		Free Air Delivery (FAD)		Weight*	Noise	Tank**
50Hz	kW	HP	bar g	psi g	bar g	psi g	m <sup>3</sup> /min	cfm	Kg	dB(A)	Ltrs.
Length: 615mm Breadth: 715mm Height: 845mm (Base-Mounted)											
Length: 1548mm Breadth: 919mm Height: 1669mm (Tank-Mounted, 270L)											
Length: 1945mm Breadth: 921mm Height: 1802mm (Tank-Mounted, 500L)											
EN 5x	5.5	7.5	7	102	7.2	104	0.37~0.84	13~29.5	240	66	270/500
EN 5x	5.5	7.5	9.5	138	9.7	141	0.29~0.68	10.2~24	240	66	270/500
EN 7	7.5	10	7	102	7.2	104	0.55~1.20	19.5~42.5	265	66	270/500
EN 7	7.5	10	9.5	138	9.7	141	0.52~0.93	18.3~33	265	66	270/500
EN 11	11	15	7	102	7.2	104	0.89~1.77	31.5~62.5	285	71	270/500
EN 11	11	15	9.5	138	9.7	141	0.73~1.53	25.7~54	285	71	270/500
EN 15	15	20	7	102	7.2	104	1.01~2.05	35.5~72.4	315	71	500
EN 15	15	20	9.5	138	9.7	141	0.88~1.80	31~63.5	315	71	500

### Options:

1. Base mounted (or non tank-mounted unit) / Tank mounted / Tank mounted with dryer
2. Fixed speed / Variable speed
3. Mineral oil / Synthetic oil / Food grade oil

## Air-Oil Flow Circuit



# AFTER SALES AND SERVICE



## Prompt and Quick Service Support

With over 350+ distributors and 1200+ service experts worldwide, ELGi ensures seamless operations for our customers.

Genuine ELGi parts prolong the life of the compressor and increase performance. Customers can easily obtain ELGi spare parts from the company's after-sales network that offers genuine customer care and excellent follow-up services.

## ELGi Airmate Accessories



**Drain Valve**  
(Timer controlled and zero loss)



**Oil Water Separator**



**Refrigeration Air Dryer**



**Moisture Separator**



**Filter**



**Air Receiver**

# ELGi

## Always Better.

Elgi Equipments Limited is a global air compressor manufacturer with a broad line of innovative and technologically superior compressed air systems.

ELGi has consistently worked towards ensuring that its customers achieve their productivity goals while keeping the cost of ownership low. ELGi offers a complete range of compressed air

solutions from oil lubricated and oil free rotary screw compressors, oil lubricated and oil free reciprocating compressors and centrifugal compressors, to dryers, filters, and downstream accessories.

The company's portfolio of over 400 products has found wide application across industries.

### 60+

Years of Customer-Centric Innovation

### 2 Mn+

Installations Worldwide

### 120+

Countries and Counting



### DEMING PRIZE 2019

ELGi is the first globally established industrial air compressor manufacturer to be awarded the Deming Prize for Excellence in Total Quality Management.



